



# HABESHA

ETHIOPIAN RESTAURANT



---

Argwings kodhek road. Tell.0733314677/0733730469/0725869955  
P.O.Box 52214 00200 Nairobi Kenya.

---

## 1. DORO WOT

Ethiopian favourite dish, chicken curry marinated with spiced butter, one piece, served with an egg and accompanied with homemade cheese

..... 1200/=



## 2. SHEKLA TIBS

Pan fried goat meat with ribs, well-seasoned with rosemary, and green paper served with ETHIOPIAN SHEKLA /Plate/dish.

..... 1100/=



## 3. MIXED DISH

Of each kind on the Injera base, various kind of WOT (sauce) half meat, half vegetables both hot and non-hot and also cabbage, kale, carrots and potatoes sauce.

..... 1200/=



#### 4. KIKIL

Well cooked (boiled )Got meat, marinated with traditional spices with soup (shorba)and prepared in Ethiopian way.

..... 1100/=



#### 5. KEY TIBS FIRFIR

Is a mixture of Injera and Well pan fried beef meat, well-seasoned with Berbere (dry red pepper powder),green paper and other traditional spices

..... 1100/=



#### 6. SHIRO TEGAMINO

Made of powdered legumes or dried peas with traditional spices prepared in Ethiopian way served with silver dish a taste you will never forget.

..... 1000/=



## 7. ALICHA MINCHET

Stew of prime beef (in piquant sauce) prepared with a variety of ingredients with butter (without chillies).

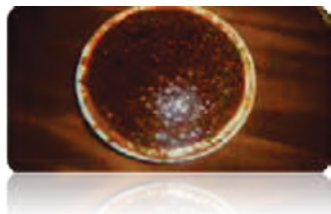
..... 1000/=



## 8. KEY MINCHET

Stew of prime beef (in piquant sauce )prepared with a variety of ingredient with butter and berbere (chillies).

..... 1000/=



## 9. KEY WOT

Well spiced hot sauce of beef, marinated with butter and Berber.

..... 1100/=



## 10. KITFO

Minced meat, raw (medium) or well done seasoned with spiced butter accompanied with cheese, unforgettable taste, served in traditional way.

..... 1150/=



## 11. DULLET

Minced beef, liver and beef are added to a pan in which onion have been cooked in butter with green and red chillies, prepared Ethiopian way.

..... 1100/=



## 12. SPECIAL KITFO

It is minced beef, raw, lightly or even thoroughly cooked served with Ayebe Begomen (mixture of cheese and spinaches) and marinated with spiced butter, a taste you will never forget.

..... 1200/=



### 13. ZILZEL TIBS

Pan fried made from strips of beef with rosemary, served with Ethiopian sheklaplate(dish )  
Ethiopian Nyama choma.

..... 1100/=



### 14. KEY TIBS

Well pan fried beef meat, well-seasoned with Berbere(dry red pepper powder), green paper and other traditional spices and with soup

..... 1100/=



### 15. FASOLIA

String beans and carrots sautéed in caramelized onion.

..... 1000/=





## 16. GORED GORED

A raw delight is gored gored, tender beef fillet cubed and rolled in a blend of spices similar to kitfo and served on injera.

..... 1100/=



## 17. BOZENA SHIRO

Made of powdered dried peas and a mixture with beef meat marinated with butter spiced and served with traditional Ethiopian pot (SHEKLA DISH).

..... 1100/=



## 18. DENCHE BESIGA

It is a mixture of well pan fried beef and fillet with cooked potatoes marinated with traditional prepared in Ethiopian way.

..... 1100/=



## 19. VEGETABLES

Mixed vegetables, delicious vegetarians, and platters with fresh cabbage, Sukhumi (kale) peas, beans, tomatoes, beet-root, lentils and lettuce.

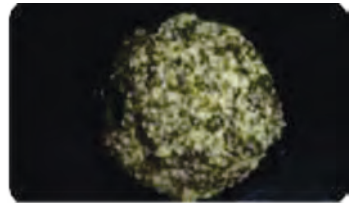
..... 1100/=



## 20. AYEB- BEGOMEN

Mixture of grated spinach and kale with homemade cheese marinated with spiced butter and milled chillies. It is a delicious and light food

..... 1000/=



## 21. GOMEN

Chopped collard greens simmered in a mild sauce-herb.

..... 950/=





## 22. DORO TIBS

Boneless, skinless cubed chicken sautéed in a special blend of spices and braised in onions tomato, green pepper and purified butter. Served hot or mild.

..... 1100/=



## 23. ATERKIK ALITCHA

Split yellow piece made with onion, garlic, ginger, and turmeric.

..... 950/=



## 24. GOMEN BE SIGA

Collard Green prepared either with Lamb or Beef.Lamb with bone cooked with collar green, herbed butter, garlic, ginger, onions, and green pepper.

..... 1100/=



## 25. NECH TIBS

Succulent meat cooked in a mild and distinctly flavorful sauce of mild green pepper sauce

..... 1100/=



## 26. NECH TIBS FIRFIR

Is a mixture of Injera and Wellpan fried beef meat, well seasoned with traditional spices

..... 1100/=



## 27.TIRE SIGA

Prime red beef with some white, served raw

..... 1150/=



## 28. AYIB

Traditional Ethiopian cottage, homemade cheese

.....950/=



## 29. SALATA

Crisp green salad topped with green pepper tomato, onion in an authentic house dressing

.....500/=



## 30. TIMATIM SELATA (KACHUMBARI)

Chopped tomatoes, onions and green chili in oil and lemon dressing

.....500/=



### 31. ASSA WET

Well spiced sauce of fish prepared in Ethiopian way, marinated with onion ,with chili or without chili and salad oil

..... 1100/=



### 32.ASSA DULLET

Hand minced fish marinated with onions, green pepper and salad oil

..... 110/=



### 33. DRY TIBS

Well pan fried beef meat, well-seasoned with or without chillies and other traditional spices and without soup.

..... 1200/=



### 34. FISH FRY

Well done pan fried boneless fish

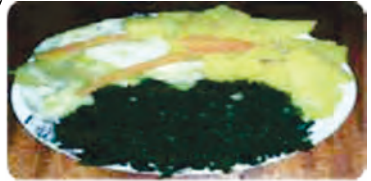
.....1100/=



### 35. CABBAGE MIX

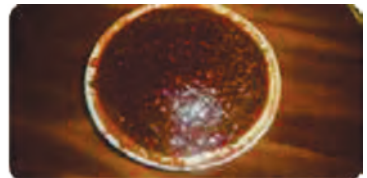
A said vegetables of cabbage with carrot, kale and potato  
With Carrot prepared in Ethiopian way

.....400/=



### 36. KEY MISIR / LENTEN

.....950/=



# DRINKS

## FRESH FRUIT JUICE



Mango.....	<b>200/=</b>
Orange.....	<b>200/=</b>
Passion.....	<b>200/=</b>
Mix.....	<b>200/=</b>
Avocado.....	<b>200/=</b>
Pineapple.....	<b>200/=</b>
Papaya.....	<b>200/=</b>

## ETHIOPIAN COFFEE AND TEA



Ethiopian Coffee Per Cup.....	<b>100/=</b>
Ethiopian coffee per pot.....	<b>1,500/=</b>
Tea with milk.....	<b>150/=</b>
Special strong tea.....	<b>100/=</b>
Lemon tea.....	<b>100/=</b>
Ginger tea.....	<b>100/=</b>
Masala tea.....	<b>150/=</b>

## TEJ /ETHIOPIAN HONEY WINE



Tej in brille/traditional glass.....	<b>250/=</b>
Tej in bottle.....	<b>700/=</b>



## SODAS



**300ml**

**500ml**

Coke.....	<b>100/=</b>	<b>150/=</b>
Fanta .....	<b>100/=</b>	<b>150/=</b>
Sprite.....	<b>100/=</b>	<b>150/=</b>
Krest.....	<b>100/=</b>	<b>150/=</b>
Stony 300ml.....	<b>100/=</b>	<b>150/=</b>

## OTHER DRINKS



Diet coke.....	<b>150/=</b>
Soda water.....	<b>150/=</b>
Tonic.....	<b>150/=</b>
Novida pineapple.....	<b>150/=</b>
Redbul.....	<b>250/=</b>
Ambo mineral water.....	<b>250/=</b>
Mineral water 500ml.....	<b>150/=</b>
Mineral water 1 liter.....	<b>200/=</b>

## BEERS

TUSKER LAGER.....	<b>250/=</b>
TUSKER MALT.....	<b>250/=</b>
TUSKER LIGHT.....	<b>250/=</b>
WHITE CAP LAGER.....	<b>250/=</b>
WHITE CAP LIGHT.....	<b>250/=</b>
PILSNER ICE.....	<b>250/=</b>
SIERA BLOND.....	<b>250/=</b>
SIERRA PLATINUM.....	<b>250/=</b>
HEINEKEN.....	<b>300/=</b>
GUINNESS 500ML.....	<b>300/=</b>
SNAPP.....	<b>250/=</b>
RED'S CAN.....	<b>220/=</b>
WINDHOEK LAGER.....	<b>300/=</b>
CASTILE.....	<b>250/=</b>
BLACK ICE.....	<b>250/=</b>
RED ICE.....	<b>250/=</b>
PERONI AZURO.....	<b>250/=</b>
CARLSBERG.....	<b>250/=</b>
GUARANA.....	<b>250/=</b>



## BEERS

4TH STREET.....	<b>3,000/=</b>
CELLAR CASK.....	<b>3,000/=</b>
DEMIMO.....	<b>3,000/=</b>
DROSTDY HOFF.....	<b>3,000/=</b>
FOUR COUSIN.....	<b>3,000/=</b>
FRONTERA.....	<b>3,000/=</b>
GATONEGRO.....	<b>3,000/=</b>
MAMA MIA.....	<b>3,000/=</b>
MELLIZO.....	<b>3,000/=</b>
MATEUS.....	<b>3,000/=</b>
PEARLY BAY.....	<b>3,000/=</b>
TOM MASI.....	<b>3,000/=</b>
PACIFIC COAST.....	<b>3,000/=</b>
SAINT.....	<b>3,000/=</b>



## WINE SERVED IN GLASS

DROSTDY-HOF FINE DRY RED.....	<b>250/=</b>
DROSTDY-HOF RED DRY.....	<b>250/=</b>
DROSTDY-HOF SEMI SWEET.....	<b>250/=</b>
DROSTDY-HOF WHITE DRY.....	<b>250/=</b>
CELLAR CASK WHITE SWEET.....	<b>250/=</b>
CELLAR CASK RED SWEET.....	<b>250/=</b>



## BRANDY

½ RICHOT 350ML.....	<b>800/=</b>
½ VICEROY.....	<b>900/=</b>
¼ RICHOT 250ML.....	<b>600/=</b>
¼ VICEROY 250ML.....	<b>600/=</b>
RICHOT TOT.....	<b>250/=</b>
VICEROY TOT.....	<b>250/=</b>
RICHOT 750ML.....	<b>3,500/=</b>
VICEROY 750ML.....	<b>4,000/=</b>
GOLD NAPOLEON.....	<b>5,500/=</b>



## RUM

CAMPARI TOT.....	<b>250/=</b>
CAMPARI 750ML.....	<b>5,000/=</b>
CAPTAIN MORGAN JAM TOT.....	<b>250/=</b>
CAPTAIN MORGAN JAM 750ML.....	<b>250/=</b>
CAPTAIN MORGAN SPICED TOT.....	<b>250/=</b>
CAPTAIN MORGAN SPICED 750ML..	<b>5,500/=</b>
MALIBU TOT.....	<b>250/=</b>
MALIBU 750ML.....	<b>5,500/=</b>
MARTIN BIANCO TOT.....	<b>250/=</b>
MARTIN BIANCO 1LTR.....	<b>5,000/=</b>
MARTIN ROSSO TOT.....	<b>250/=</b>
MARTIN ROSSO 1LTR.....	<b>5,000/=</b>
MYRES RUM TOT.....	<b>250/=</b>
MYRES RUM 750ML.....	<b>5,000/=</b>
VAT 69 TOT.....	<b>250/=</b>
VAT 69 750ML.....	<b>5,000/=</b>



## BRANDY

½ GILBEYS.....	<b>800/=</b>
¼ GILBEYS.....	<b>600/=</b>
GILBEYS TOT.....	<b>250/=</b>
GILBEYS 750ML.....	<b>5,000/=</b>
GORDON GIN TOT.....	<b>250/=</b>
GORDON GIN 750ML.....	<b>4,500/=</b>



## BRANDY

½ SMIRNOFF VODKA.....	<b>800/=</b>
¼ SMIRNOFF VODKA.....	<b>600/=</b>
ABSOLUTE VODKA TOT.....	<b>300/=</b>
ABSOLUTE VODKA 1LTR.....	<b>5,000/=</b>
GREY GOOSE TOT.....	<b>350/=</b>
GREY GOOSE 750ML.....	<b>5,000/=</b>
SMIRNOFF VODKA BLUE TOT.....	<b>250/=</b>
SMIRNOFF VODKA BLUE 1LTR.....	<b>5,000/=</b>
SMIRNOFF VODKA RED TOT.....	<b>250/=</b>
SMIRNOFF VODKA RED 750ML.....	<b>3,500/=</b>
ZAPPA TOT.....	<b>200/=</b>
ZAPPA 750ML.....	<b>4,000/=</b>



## SPIRIT

AMARULA TOT.....	<b>250/=</b>
AMARULA 750ML.....	<b>5,000/=</b>
BACARDI TOT.....	<b>5,000/=</b>
BAILEYS TOT.....	<b>250/=</b>
BAILEYS 750ML.....	<b>5000/=</b>
OZUO TOT.....	<b>150/=</b>
OZUO 870ML.....	<b>3,000/=</b>





## WHISKEY

BUSHMILLS TOT.....	<b>300/=</b>
BUSHMILLS 1LTR.....	<b>6,500/=</b>
CHIVAS REGAL TOT.....	<b>400/=</b>
CHIVAS REGAL 750ML.....	<b>7,000/=</b>
FAMOUS GROUSE TOT.....	<b>300/=</b>
FAMOUS GROUSE 750ML.....	<b>6,500/=</b>
GLENFIDDICH TOT.....	<b>400/=</b>
GLENFIDDICH 750ML.....	<b>7,000/=</b>
GRANTS TOT.....	<b>300/=</b>
GRANTS 750ML.....	<b>4,500/=</b>
J&B TOT.....	<b>300/=</b>
J&B 750ML.....	<b>4,500/=</b>
JACK DANIEL'S TOT.....	<b>400/=</b>
JACK DANIEL'S 750ML.....	<b>6,500/=</b>
JAMESON TOT.....	<b>300/=</b>
JAMESON 1LTR.....	<b>6,500/=</b>
JW BLACK LABEL TOT.....	<b>400/=</b>
JW BLACK LABEL 1LTR.....	<b>7,500/=</b>
JW RED LABEL TOT.....	<b>300/=</b>
JW RED LABEL 750ML.....	<b>5,000/=</b>
SOUTHERN COMFORT TOT.....	<b>300/=</b>
SOUTHERN COMFORT 1LTR.....	<b>6,000/=</b>
TEACHERS TOT.....	<b>300/=</b>
TEACHERS 750ML.....	<b>4,500/=</b>
WHITE HORSE TOT.....	<b>300/=</b>
WHITE HORSE 1LTR.....	<b>5,500/=</b>





## WHISKEY

JOSE GOLD TOT.....	<b>250/=</b>
JOSE GOLD 750ML.....	<b>5,000/=</b>
JOSE SILVER TOT.....	<b>250/=</b>
JOSE SILVER 750ML.....	<b>5,000/=</b>
ROSE TEQUILA TOT.....	<b>200/=</b>
ROSE TEQUILA 750ML.....	<b>5,000/=</b>
TEQUILA RESERVA GOLD TOT.....	<b>250/=</b>
TEQUILA RESERVA GOLD 750ML.....	<b>5,500/=</b>
TEQUILA RESERVA SILVER TOT.....	<b>250/-</b>
TEQUILA RESERVA SILVER 750ML.....	<b>5,500/=</b>
TIA MARIA TOT.....	<b>250/=</b>
TIA MARIA 700ML.....	<b>4,000/=</b>



## TEQUILA

CAMINO TEQUILA CLEAR TOT.....	<b>250/=</b>
CAMINO TEQUILA CLEAR 750ML....	<b>3,500/=</b>
CAMINO TEQUILA GOLD TOT.....	<b>250/=</b>
CAMINO TEQUILA GOLD 750ML....	<b>3,500/=</b>



## COGNAC

HENNESSY TOT.....	<b>350/=</b>
HENNESSY 750ML.....	<b>7,000/=</b>
COURVOISER TOT.....	<b>450/=</b>
COURVOISER 700ML.....	<b>7,000/=</b>
MARTEL TOT.....	<b>400/=</b>
MARTEL 700ML.....	<b>7,000/=</b>
REMY MARTIN TOT.....	<b>500/=</b>
REMY MARTIN 700ML.....	<b>9,000/=</b>







